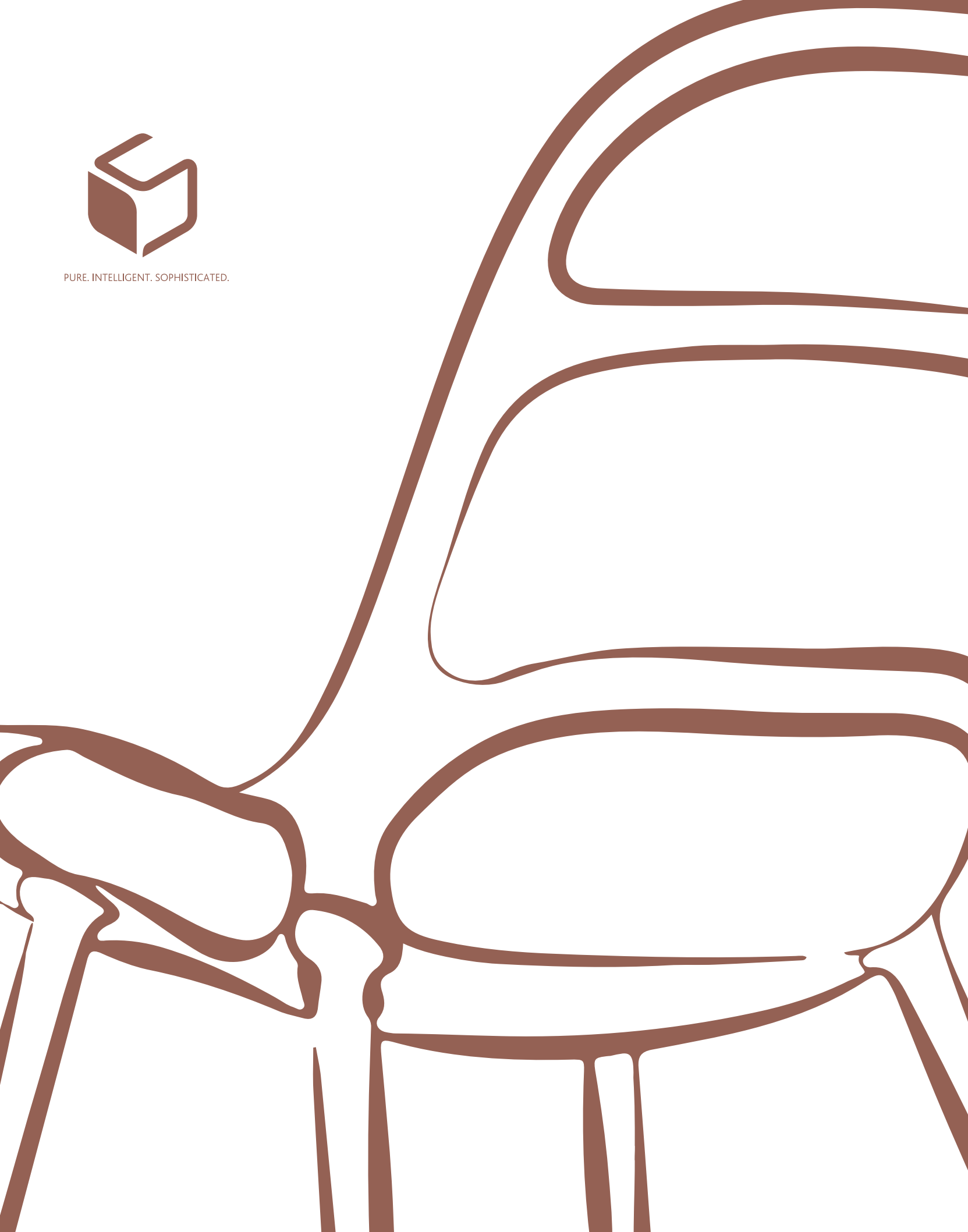




PURE. INTELLIGENT. SOPHISTICATED.





PURE. INTELLIGENT. SOPHISTICATED.



Pure.



Intelligent

*Tree is a living thing.
Wood is material for art.*

Our furniture is 100% inspired by nature and made of sustainable materials.



Sophisti- cated

Our products bring out the finest features of MS&WOOD's engineering and manufacturing, and take our environmental awareness to the next level.

Crafted by MASTERS AND made of WOOD

MS&WOOD is the place where innovative minds meet traditional craftsmanship and cutting edge 5 axis CNC machining technology.





**Pure.
Intelligent.
Sophisticated.**

C

O

L

L

E

C

T

I

O

N

S





E L L E





**Elle is a
sophisticated
beauty**



***Elle's
sustainability lies
in her balance of
the aesthetic and
the utilitarian.***

She features curved volumes yet her silhouettes remain simple. Elle takes the spotlight when being admired and reveals the interplay between her slopes and edges when seen from different viewpoints. However, Elle can remain in the background or even become a main stage on which life plays out.







The heirloom quality of Elle's beauty was achieved through solid wood "extreme sculpting" process and a series of handmade models.

Elle is cleverly engineered so as to maintain visual sleekness. Each and every part of the furniture is stroked a thousand times by the hands of our skilled craftsmen and thus given a seal of purity and perfection.



Elle carries her role well in very different interiors or in one space as it changes over the years.



Elle pieces contain lasting values

Her pieces contain lasting formal and functional values that transcend time so as to be passed on and used by several generations.





I closed my eyes and imagined a chair that personifies beauty. I modeled a chair whose form strictly followed function and then slowly began subtracting material and smoothing out the edges. I gradually arrived at a sleek solid wood chair that used minimal amounts of material. It still met the basic function of seating whilst retaining comfort and ergonomics.







PRIMUM

Primum concept is based on researching structural engineering forms that create high structural load bearing capacity.

The key focus in the development of the Primum Collection chair were ergonomics and comfort.





Main attention to development of this solid wood chair as part of Primum collection was to consider the ergonomic aspects and be designed for comfort.

It is a piece with the backrest that wraps around, well supported on robust legs that provide just enough material for integrated solid joints that smoothly interconnect with the seat creating lines that build the chair's character.









Primum collection fits in modern living homes bringing it's unique line in all areas of home: from hallway, through dining and living area and all the way to home office space.







The Alter chair is versatile. It is suitable for the rigours of commercial applications and is equally at home in an intimate setting. Triangulated legs lighten the product whilst retaining strength and solidity. Undulating backrest lines form a handle that is pleasant to the touch offering optimum seating comfort.





KOTONA



Solid wood furniture collection Kotona is simple and versatile collection for both public and private environments. Sculptural details give collection its own sound. Kotona collection is example of intercultural cooperation which celebrate collaboration with contemporary design and fine craftsmanship.

Launched in September 2019, first Kotona products are coffee and side table. Even not so big products, they best represent the true spirit of collection. Their playful nature and pure forms allow user to manipulate them easily and use them in different way depending on situation or will.



Designers



Nataša Perković

Nataša Perković is a product designer from Sarajevo, Bosnia and Herzegovina. She aims to fuse aesthetic value with innovation and commerce. This is Nataša's way of inspiring people to enjoy her design sensibilities for many years to come.

Nataša lectures at the Department of Product Design at the Academy of Fine Arts in Sarajevo. Currently on a semester's study leave, she operates from the Design Lab at the Kyoto Institute of Technology in Japan.

natasaperkovic.com



Mikko Laakkonen

Mikko Laakkonen was born in Espoo in 1974. After graduating as a musical instrument maker, he studied furniture design at Kymenlaakso University of Applied Sciences, and later received his Masters degree from the University of Art and Design in Helsinki. After working in design and architecture firms for several years, Mikko founded Studio Mikko Laakkonen in 2004.

The Studio offers product design services, with the main focus on everyday items. Mikko's designs have been on display in several exhibitions around Europe, the United States, China and Japan.

He has been awarded the number of international and national prizes.

Today, Studio Laakkonen works with a variety of brands and clients from all around the world.

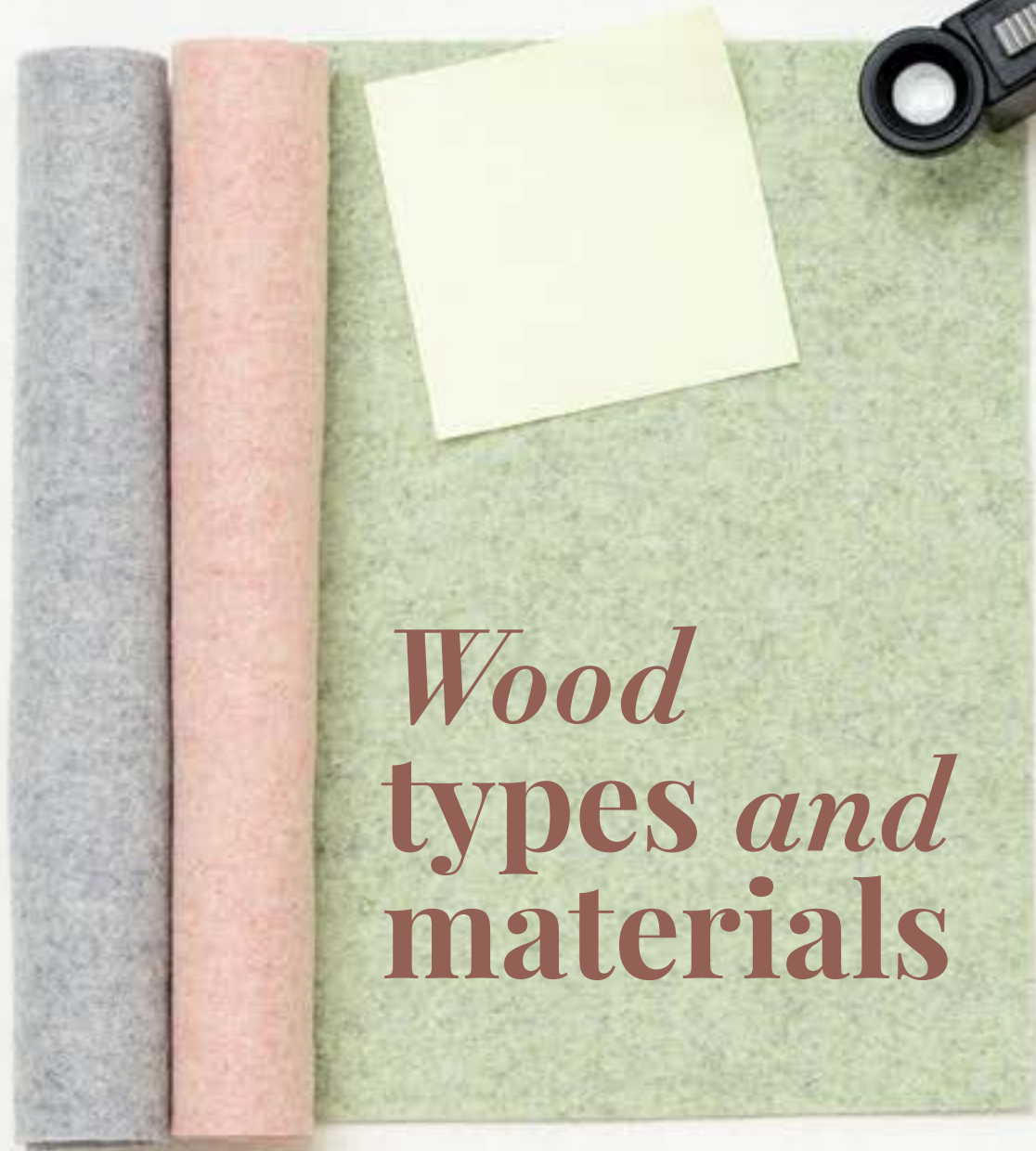


Ado Avdagić

Ado Avdagić designs furniture and interiors. He contemplates the relationship between a person, nature and form in space generating functional, ergonomic and aesthetically satisfying solutions.

Ado's products are highly regarded and he has won awards for his designs internationally. Ado has exhibited at all the major international fairs including the XXI Triennale di Milano International Exhibition and Venice Design. His products have been featured in leading design magazines.

www.avado.ba

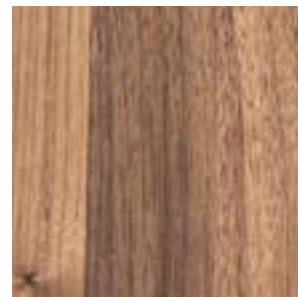


*Wood
types and
materials*

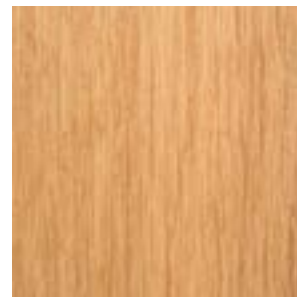


Wood Types

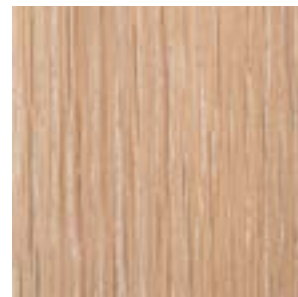
Product images are for illustrative purposes only and may differ from the actual product



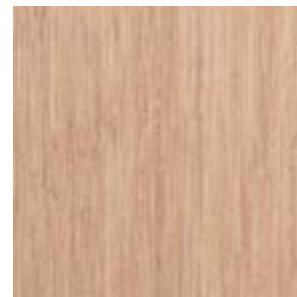
Walnut
natural oil



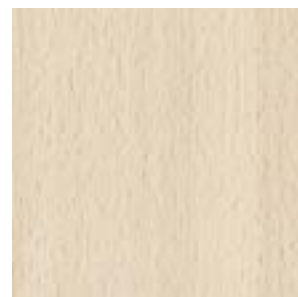
Oak
natural oil



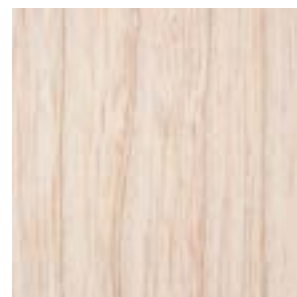
Oak
white oil



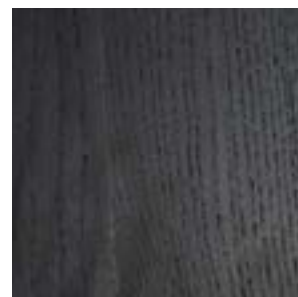
Oak
light oil



Beech
white oil



Ash
white oil



Ash
black oil

Wool Range

Product images are for illustrative purposes only and may differ from the actual product



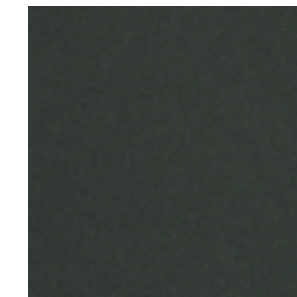
DIVINA 3 0106



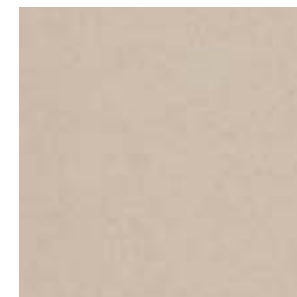
DIVINA 3 0224



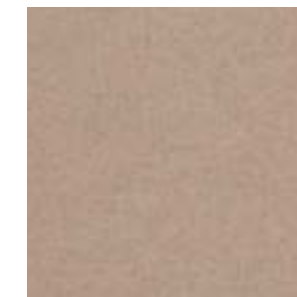
DIVINA 3 0334



DIVINA 3 0384



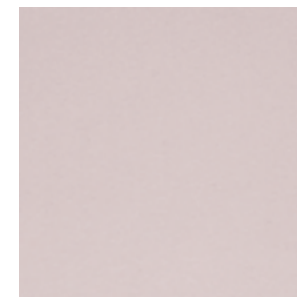
DIVINA MD 0203



DIVINA MD 0413



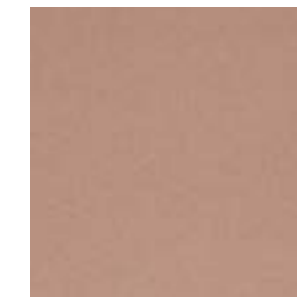
DIVINA MD 0713



HERO 0601



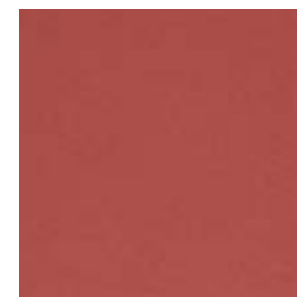
HERO 0311



HERO 0511



HERO 0541



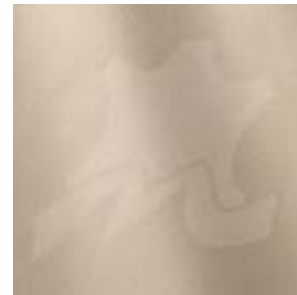
HERO 0551

Leather Range

Product images are for illustrative purposes only and may differ from the actual product



LINEA Latte 635



LINEA Panna 603



LINEA Earth 667



LINEA Siena 638



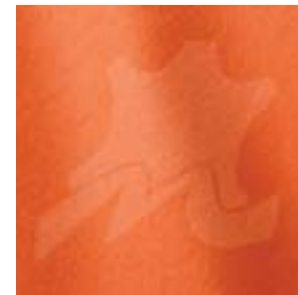
LINEA Nocciola 607



LINEA Antic 616



LINEA Mattone 613



LINEA Begonia 617



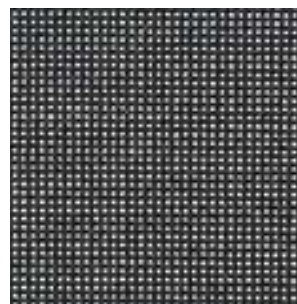
LINEA Cerise 699



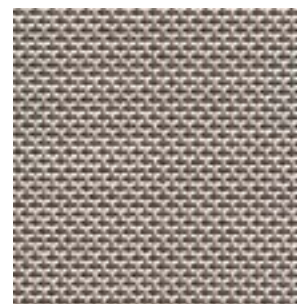
LINEA Nero 622

Mesh Range

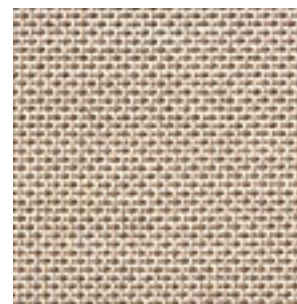
Product images are for illustrative purposes only and may differ from the actual product



7117FR-5005



7117FR-5144



7117FR-5138

Textile Range

Product images are for illustrative purposes only and may differ from the actual product



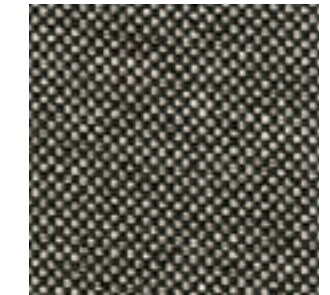
RIVET Solder EGL18



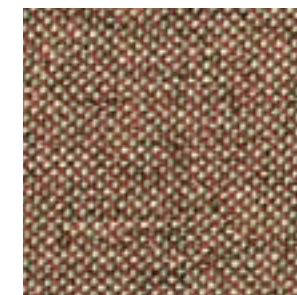
RIVET Molten EGL09



RIVET Vitreous EGL01



RIVET Twig EGL49



RIVET Abraid EGL13



RIVET Fuse EGL08



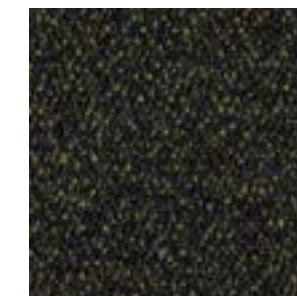
RIVET Galvanise EGL26



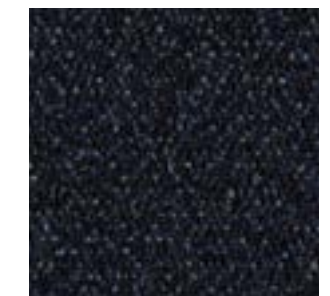
24/7 FLAX Indiction FYR06



24/7 FLAX Shift FYR17



24/7 FLAX Stint FYR12



24/7 FLAX Olympiad FYR05



24/7 FLAX Linearity FYR20

*All upholstery materials are part of MS&WOOD standard offer.
More available on request.

Impressum

Photography:

Eldin Hasanagić
www.vtfstudio.com

Design:

Haris Jusović

Print:

Color Art
Fojnica

2019 Copyright.
All Rights reserved

MS&WOOD

Podcitonja bb, 71270 Fojnica
Bosnia and Herzegovina
t/f: +387 30 831 838
e: info@mswood.ba
www.mswood.ba